

# MONTHLY MEMBERSHIP PROGRESS REPORT

District 27 A1

Results as of: 4/30/2024

GMT:

LOCATION WISCONSIN

GMT CA

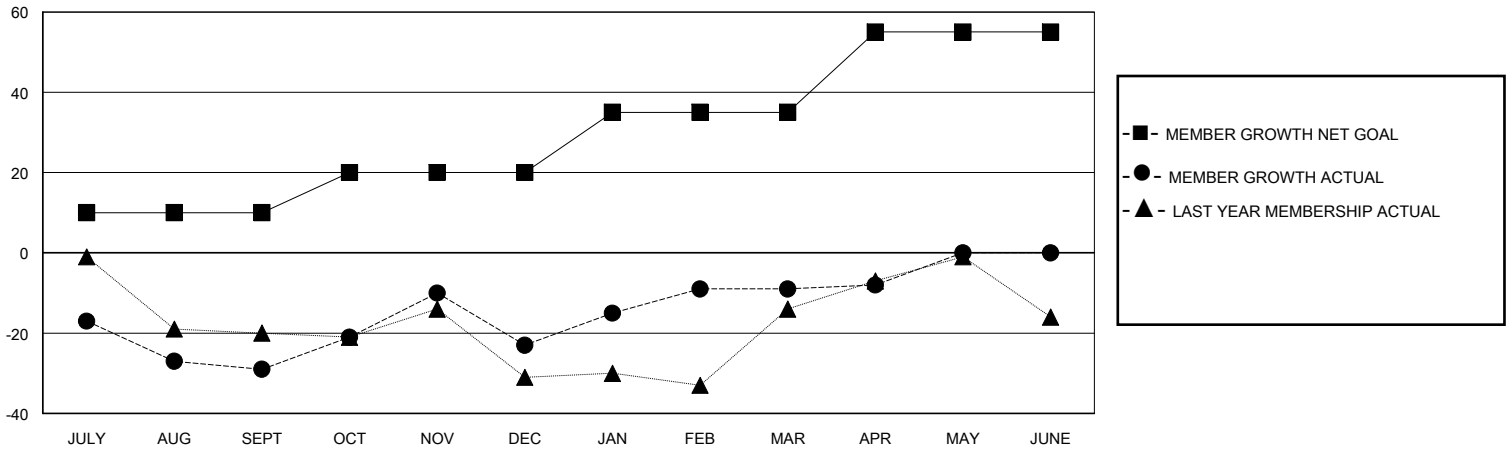
Clubs			
RESULTS FOR 2023-2024			
QUARTER	NEW CLUB GOAL	NEW CLUBS	DROPPED CLUBS
JULY/AUG/SEPT	0	0	0
OCT/NOV/DEC	0	0	0
JAN/FEB/MAR	0	0	0
APR/MAY/JUNE	1	0	0

Members			
RESULTS FOR 2023-2024			
QUARTER	MEMBER GROWTH NET GOAL	MEMBER GROWTH ACTUAL	DROPPED MEMBERS ACTUAL (including transfers)
JULY/AUG/SEPT	10	47	71
OCT/NOV/DEC	10	69	55
JAN/FEB/MAR	15	62	46
APR/MAY/JUNE	20	14	13

GOALS AND ACTUAL NEW CLUBS CUMULATIVE



GOALS AND ACTUAL MEMBERS CUMULATIVE



DROPPED CLUBS: 0	40 CLUBS OF 51 ADDED 1 OR MORE NEW MEMBERS	<b>GENDER DISTRIBUTION</b> MALE 1,364 (70.31%) FEMALE 576 (29.69%)
<b>DROPPED MEMBERS</b> DECEASED 21 CLUB CANCELLED 0 OTHER 164 TOTAL 185	<a href="#">CLICK HERE FOR CUMULATIVE MEMBERSHIP DATA</a>	TOTAL FAMILY UNIT MEMBERS 327 FAMILY MEMBERS PAYING HALF DUES 168